

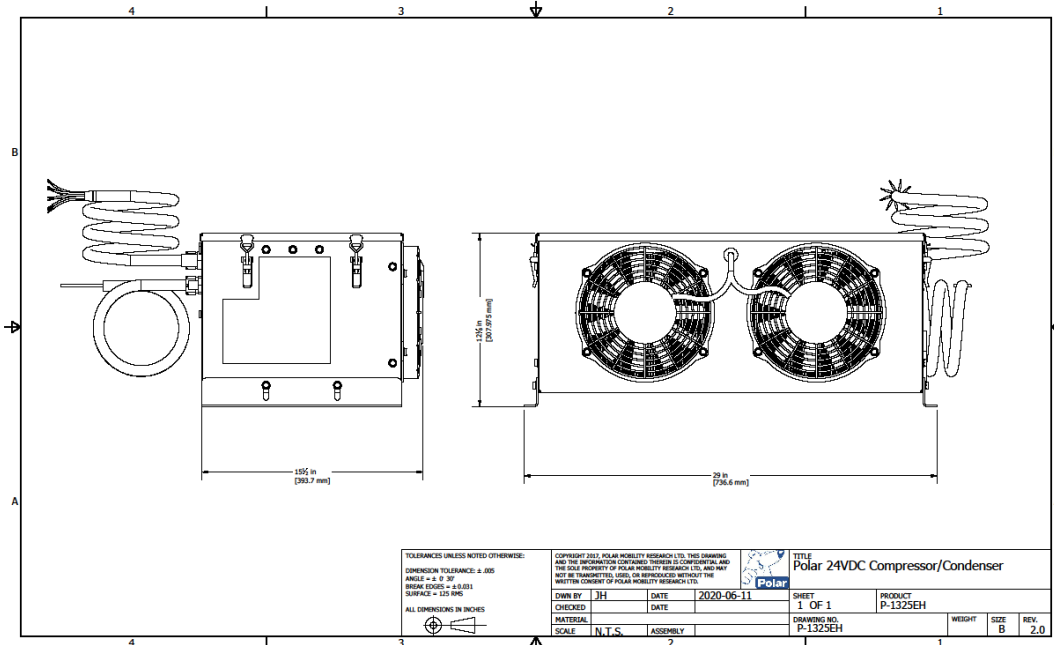


POLAR MOBILITY RESEARCH LTD.

**Polar**



Polar Mobility Research Ltd.	
<b>UNIT MODEL</b>	P-1325-HD
<b>DESCRIPTION</b>	Polar 24VDC Compressor/Condenser Unit Hydraulic Drive
<b>REFRIGERANT CHARGE</b>	R-134a
<b>CONDENSING</b>	30,000 BTU
<b>HYDRAULIC COMPRESSOR DRIVE OPTIONS</b>	4-6 GPM @ 3000 PSI; 18,000 BTU's COOLING 12-15 GPM @ 3000 PSI: 24,000 BTU'S COOLING
<b>VOLTAGE</b>	12-24 VDC
<b>FLA</b>	15-30 AMPS
<b>WEIGHT</b>	150 Lbs
<b>ELECTRICAL STANDARDS</b>	Wires: CSA TEW 105C FT1 LL67096 (UL) MTW 600V C22.2 NO: 286:17, T7 C22.2 0.4, T6



7860 62 Street SE Calgary AB T2C 5K2 Canada

Toll-Free 1-800-309-8155 Bus: (403) 279-3633 Fax: (403) 236-2759

[www.polarmobility.com](http://www.polarmobility.com)