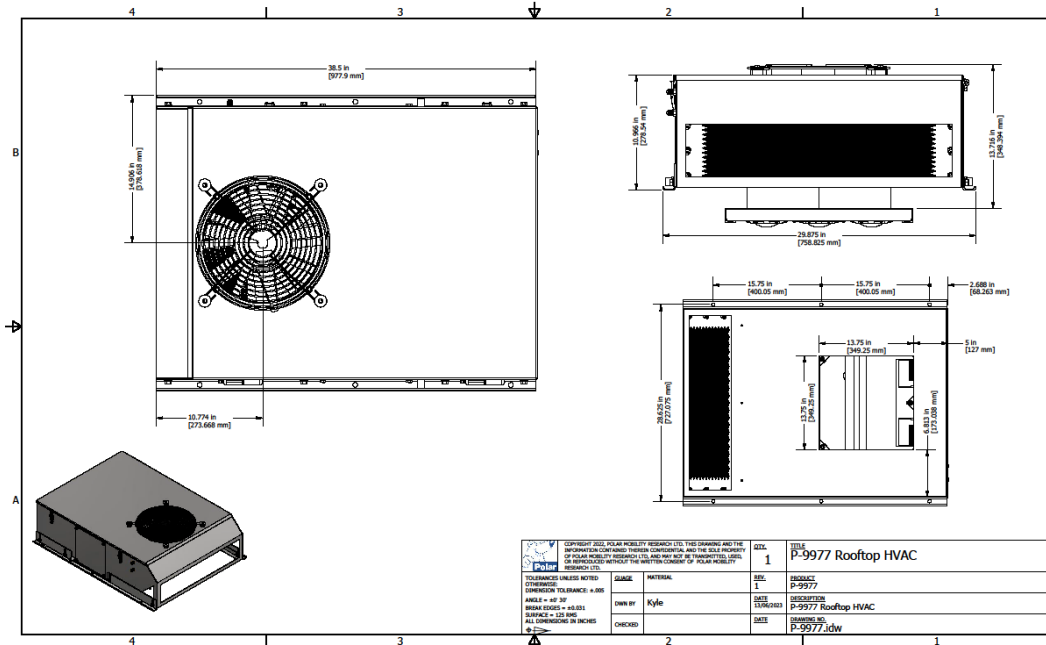




POLAR MOBILITY RESEARCH LTD.



Polar Mobility Research Ltd.	
UNIT MODEL	P-9977 Series
DESCRIPTION	Polar Rooftop HVAC
CONTROL	Polar 81-P1RPO001 Digital Air Conditioning Controller
HYDRAULIC SET UP	Open Center; P. Comp; Load Sense
HYDRAULIC COMPRESSOR DRIVE OPTIONS	4-6 GPM @ 3000 PSI; 18,000 BTU's COOLING 12-15 GPM @ 3000 PSI: 24,000 BTU'S COOLING
GLYCOL HEAT OPTION	30,000 BTU's
VOLTAGE	12 or 24 VDC
FULLY ELECTRIC OPTION	24VDC COMPRESSOR DRIVE; 18,000 BTU's COOLING
ENGINE/BELT COMPRESSOR	CHECK ENGINE MANUFACTURER FOR COMPRESSOR OPTIONS
WEIGHT	APPROX. 200-250 Lbs
ELECTRICAL STANDARDS	Wires: CSA TEW 105C FT1 LL67096 (UL) MTW 600V C22.2 NO: 286:17, T7 C22.2 0.4, T6



7860 62 Street SE Calgary AB T2C 5K2 Canada

Toll-Free 1-800-309-8155 Bus: (403) 279-3633 Fax: (403) 236-2759

www.polarmobility.com